

# Broadway Center

For the Performing Arts



## TECHNICAL SPECIFICATIONS AND INVENTORY THEATER on the Square

### TELEPHONE NUMBERS:

General Administrative Offices 253.591.5890

Production Stage Manager 253.591.5898

Facsimile 253.591.2027

Updated: June 27, 2011

### GENERAL DESCRIPTION:

Theatre on the Square is an intimate contemporary theatre built in the early 1990's. Lighting and sound control are located in a single control booth one floor above the lobby level. A Follow Spot position is located one floor above the control booth. There is a non-mechanical orchestra pit located beneath the apron, as well as limited traps. FOH Lighting positions are accessed via a grid and catwalk system. Wi-Fi is available.

### SEATING:

Total seats: 300.

Standard four aisle seat configuration. No Balcony.

### STAGE:

Floor: Masonite on suspended plywood. Manual orchestra pit. Floor can be nailed or drilled into.

A Marley type dance floor (black) is available for rent.

Stage Dimensions:

SR wall to SL rail is 75'.

Apron to the back wall is 42'.

Apron to proscenium is 9.5'.

The Proscenium is 33.33' wide and 19' high.

### SCENERY LOAD IN:

Location: Street Level Freight Elevator.

Note: In some cases, due to previously scheduled events, alternate stage access may be requested.

Dimensions: Elevator Interior.

H 9' - 6", W 7' - 2", Depth 11' - 10".

Elevator Door: H 8' - 0", W 5' - 6", Diagonal 9' - 6".

Note: Parking permit required for this location between the hours of 8:00am and 6:00pm. Arrange prior to arrival with Production Stage Manager.

#### RIGGING:

Type: T track (Double) Purchase Counterweight System.

Distance from deck to high bottom trim 38'

Number of sets: 34.

Number of Linesets available: 23.

Number of lines per set: 5.

Batten length: 50' (3' extensions available each end).

Safe load: 1,000 lbs.

Weight available: 1,000 lbs. per set.

Fly Location: S.L.

Loading floor location:

Gallery at grid level S.L.

#### DRESSING ROOM:

Located one floor below stage level with stair access.

Three dressing rooms: Two accommodate 2-3, one accommodates 10-15.

The large dressing room and one of the smaller ones have direct access to toilet facilities and shower.

#### WARDROBE:

Laundry facilities are available in the Pantages Theater.

Iron & ironing board.

Steamer.

#### EQUIPMENT AVAILABLE:

Ladders.

Chairs, stands, risers, stair units, tables, available upon request based on availability.

#### PIANO:

(Available for Rental. Specific instrument availability subject to change. Tuning requires two week notice and an additional fee).

9' Concert Grand.

Charles Walter upright.

#### UNIFORMS:

Stage crew is not uniformed. If it is anticipated crew members will be making scene shifts in view of audience, please notify Production Stage Manager in advance in order that proper attire can be arranged.

#### GOODS INVENTORY:

House Act Curtain:

Black Velour Traveler with 100% fullness, typical on Lineset.

Borders: 4 - Black Flat 50'x12'.

Legs:4 - Full 15'x25'.

Traveler:

See (House Act Curtain)

Scrim:

Black Sharkstooth.

Cyclorama:

Filled natural.

## LIGHTING SYSTEM:

### Control:

ETC Expressions 3

2 - Flat panel monitor.

RFU (Remote Focus Unit).

Location: Console is portable and may be located in control booth or in house.

### Dimmers:

250 - 2.4k.

### Patching:

Softpatch is in the board.

### Auxiliary Power:

(None)

### House Circuits:

1st Electric Pipe 30 - Circuits Lineset 4.

2nd Electric Pipe 24 - Circuits Lineset 11.

3rd Electric Pipe 18 - Circuits Lineset 20.

4th Electric Pipe 12 - Circuits Lineset 30.

### House Lights:

Controlled independently & or in the lighting board.

### Lighting Inventory:

5 - Strand 2215 15degree ERS 1000W.

15 - Strand 2220 20 degree ERS 1000W.

35 - Strand 2230 30 degree ERS 1000W.

10 - Strand 2240 40 degree ERS 1000W.

6 - Strand 2206 15/40 deg ERS 1000W.

10 - Altman 8" Fresnel 1000W.

10 - Strand 6" Fresnel 750W.

6 - Altman 3" Fresnel 100W.

8 - ALTMAN 8' 4-CKT ZIPSTRIP 40.

1 - Lycian Midget Followspot 575W.

### Miscellaneous Hardware:

6 - Iris pack.

Top-hats.

½ Top-hats.

Pattern holders (A, B size).

6 - 12' Boom and base stands.

Assorted pipe.

### Cable:

All Sizes.

## SOUND SYSTEM:

### Speaker System:

2 - Mackie 1232 full range speaker cabinets with single Mackie 15" sub set center under the apron.  
(Second sub for stereo, available on request).

### FOH Processing:

1 - Mackie TT24 32 channel digital mixing console with onboard EFX and EQ controlled by an E-machine desktop computer loaded with TT24 software.

### Playback:

1 - Denon DN C-615 rack mount CD deck  
1 - Adaptor for iPod or laptop.

### Monitors:

2 - Mackie 450 Floor Wedges.  
More monitors available upon request.

### Snakes:

1 - 16 channel, stage left or right.

### Microphones:

#### RF Microphones:

2 - Shure ULX dual wireless receivers.  
2 - Shure SM58 wireless handheld Mics.  
2 - Shure ULX belt pack transmitters.  
2 - Shure UR-1 Lavalier Mics.

#### Wired Microphones:

2 - Shure SM58's.  
2 - Shure SM57's.

### DI's:

2 - DI's available on request.

### Com:

#### ClearCom System.

1 - PL Pro RM440 4 channel base station.  
3 - 501 single channel belt packs w/ headsets.  
More com available upon request.

### Video:

Throw - 50' from booth.  
Image Width - 23'  
Movie Screen:  
24' x 15' Front Projection.

(Projection equipment and services available for an additional cost).

#### ADDITIONAL INFORMATION:

Other equipment available upon request:  
Production Stage Manager 253.591.5898

All operating personnel for technical systems are paid by User. Lighting and sound consoles must be operated by Broadway Center staff.

If you require that your lighting is to be pre-hung, please be aware that additional crew expenses will be incurred.

Building on stage is strictly prohibited. Minor repairs may be done with permission of Production Stage Manager.

Dry ice is preferred. Chemical foggers are allowed.

All incendiary, explosive and laser devices must meet all safety regulations. Be prepared to show and/or obtain all (APPROPRIATE LICENSES and PERMITS).

Recording of performances by any means may require additional labor charges.

Smoking is prohibited inside all Broadway Center facilities.

No guaranteed secure valuable storage is available.

On street and paid lot parking is available in the immediate area.

#### DELIVERY OF GOODS:

Sets, costumes and other materials belonging to the User delivered prior to contracted time will not be accepted by the Broadway Center Staff without written arrangements and additional charges to the User.

The Broadway Center makes no guarantee that space would be available to receive materials arriving early. In no case are deliveries to be made outside of 9:00 a.m. - 5:00 p.m., Monday through Friday, without special arrangement. The Broadway Center will not accept any goods shipped to the Broadway Center for the User, or for any person claiming to be acting for the User, if any sum is to be paid the carrier upon his delivery thereof.

#### SOUND/LIGHTING CONSOLES:

The House Sound and Lighting Consoles is located one floor above the auditorium in control booth. (Space is limited) If your production requires more audio flexibility than the house audio control equipment or location offers, advance notice is required.

Local #15 I.A.T.S.E. requires forty-eight (48) hours notice of cancellation of stage hand calls. If less than 48 hours is given, the User may be charged a minimum call at the prevailing rates for each stagehand. Contact Broadway Center Production Stage Manager to make all stage crew calls. Do not phone Local directly (with the exception of yellow card attractions).

PIPE NO.	DISTANCE FROM PL.	USE	BRICKS WEIGHT	MOVE	TRIM	FROM CENTER	NOTES
	0'-0"	PLASTER LINE					
1	6'	1# Boarder	4				
2	1'-3"	1# Legs	5				
3	2'						
4	3'	#1 ELECTRIC	27				
5	5'						
6	5'-9"	Movie Screen	22				
7	6'-6"	No Line Set					
8	7'-3"	2# Boarder	4				
9	8'	2# Legs	6				
10	10'-3"						
11	11'	#2 ELECTRIC	29 1/2				
12	11'-9"						
13	12'-6"	No Line Set					
14	13'-3"						
15	14'						
16	14'-9"	No Line Set					
17	15'-6"	3# Boarder	3				
18	16'-3"	TRAVLER MAIN CUTRAIN	26				
19	17'						
20	18'-6"	#3 ELECTRIC	24				
21	20'-9"						
22	21'-6"	4# Border	4				
23	22'-3"	4# Legs	5				
24	23'						
25	23'-9"	No Line Set					
26	24'-6"	No Line Set					
27	25'	Black Scrim	4				
28	26'	No Line Set					
29	26'-6"	No Line Set					
30	27'-3"	#4 ELECTRIC	17				
31	28'						
32	28'-9"	White Cyc	5				
33	29'-6"	Black Cyc	8				
34	31'						

Color Scheme  
Spread sheet

Pipe Weight  
6 1/2 Bricks

Weights

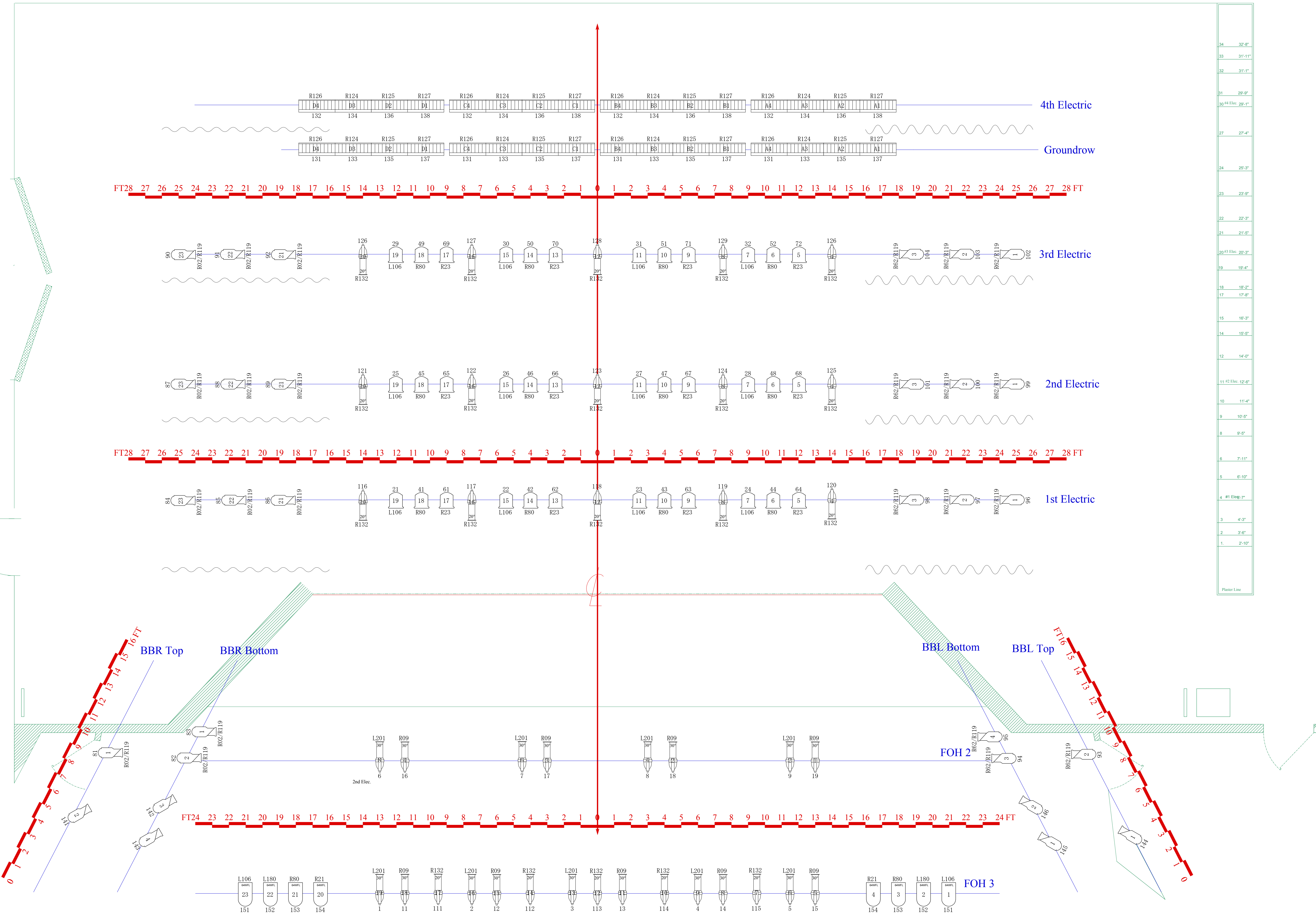
Brick 30 Lbs  
1/2 Brick 15 Lbs  
Plate Every 6 Bricks

Spike

Yellow	Show Needs
Green	Electrics
Gray	Permanent
Red	Out
Green	In
Black	House
Orange	Electrics

Fly Heights

25' Fly Height  
30' Stage -> Grid  
15' Stage -> Rail  
15' Rail -> Grid



34	32'-8"
33	31'-11"
32	31'-1"
31	29'-9"
30	29'-1"
27	27'-4"
24	25'-3"
23	23'-9"
22	22'-3"
21	21'-5"
20	19'-3"
19	19'-4"
18	18'-2"
17	17'-8"
15	16'-3"
14	15'-5"
12	14'-0"
11	12'-6"
10	11'-4"
9	10'-5"
8	9'-5"
6	7'-11"
5	6'-10"
4	4'-7"
3	4'-3"
2	3'-6"
1	2'-10"
Plaster Line	

Instruments		
	Lekolite 20	
	Lekolite 30	

KEY	
	Color
	Unit Number
	Channel

**Theater on the Square**  
 Between S. 9th & S. 11th on Broadway  
 Tacoma, WA 98402

Show Name <b>Theater on the Square Repertory Lighting Plot</b>		Drawn By <b>Kelly Kirschenman</b>	Date <b>6-14-2011</b>
Revision <b>Revision v3</b>			
CAD File Name <b>TotS Rep Plot 2011</b>			

## Instrument tots 6-14-2011

Position	Unit Number	Channel	Dimmer	Inst Type
1st Electric	1	96	121	Alt 360Q 6x12
	2	97	122	Alt 360Q 6x12
	3	98	123	Alt 360Q 6x12
	4	120	127	Lekolite 20
	5	64	128	8" Fresnel
	6	44	129	8" Fresnel
	7	24	130	8" Fresnel
	8	119	131	Lekolite 20
	9	63	132	8" Fresnel
	10	43	133	8" Fresnel
	11	23	134	8" Fresnel
	12	118	136	Lekolite 20
	13	62	137	8" Fresnel
	14	42	138	8" Fresnel
	15	22	139	8" Fresnel
	16	117	141	Lekolite 20
	17	61	142	8" Fresnel
	18	41	143	8" Fresnel
	19	21	144	8" Fresnel
	20	116	145	Lekolite 20
	21	86	148	Alt 360Q 6x12
	22	85	149	Alt 360Q 6x12
	23	84	150	Alt 360Q 6x12
2nd Electric	1	99	151	Alt 360Q 6x12
	2	100	152	Alt 360Q 6x12
	3	101	153	Alt 360Q 6x12
	4	125	154	Lekolite 20
	5	68	155	8" Fresnel
	6	48	156	8" Fresnel
	7	28	157	8" Fresnel
	8	124	158	Lekolite 20
	9	67	159	8" Fresnel
	10	47	160	8" Fresnel
	11	27	161	8" Fresnel
	12	123	163	Lekolite 20
	13	66	164	8" Fresnel
	14	46	165	8" Fresnel
	15	26	166	8" Fresnel
	16	122	167	Lekolite 20
	17	65	168	8" Fresnel
	18	45	169	8" Fresnel
	19	25	170	8" Fresnel
	20	121	171	Lekolite 20
	21	89	172	Alt 360Q 6x12
	22	88	173	Alt 360Q 6x12
	23	87	174	Alt 360Q 6x12

<b>Position</b>	<b>Unit Number</b>	<b>Channel</b>	<b>Dimmer</b>	<b>Inst Type</b>
3rd Electric	1	102	175	Alt 360Q 6x12
	2	103	176	Alt 360Q 6x12
	3	104	177	Alt 360Q 6x12
	4	126	209	Lekolite 20
	5	72	178	8" Fresnel
	6	52	179	8" Fresnel
	7	32	180	8" Fresnel
	8	129	210	Lekolite 20
	9	71	181	8" Fresnel
	10	51	182	8" Fresnel
	11	31	183	8" Fresnel
	12	128	211	Lekolite 20
	13	70	184	8" Fresnel
	14	50	185	8" Fresnel
	15	30	186	8" Fresnel
	16	127	212	Lekolite 20
	17	69	187	8" Fresnel
	18	49	188	8" Fresnel
	19	29	189	8" Fresnel
	20	126	209	Lekolite 20
	21	92	190	Alt 360Q 6x12
	22	91	191	Alt 360Q 6x12
	23	90	192	Alt 360Q 6x12
4th Electric	A1	138	213	Zip Strip
	A2	136	214	Zip Strip
	A3	134	215	Zip Strip
	A4	132	216	Zip Strip
	B1	138	213	Zip Strip
	B2	136	214	Zip Strip
	B3	134	215	Zip Strip
	B4	132	216	Zip Strip
	C1	138	203	Zip Strip
	C2	136	204	Zip Strip
	C3	134	202	Zip Strip
	C4	132	201	Zip Strip
	D1	138	203	Zip Strip
	D2	136	204	Zip Strip
	D3	134	202	Zip Strip
	D4	132	201	Zip Strip

<b>Position</b>	<b>Unit Number</b>	<b>Channel</b>	<b>Dimmer</b>	<b>Inst Type</b>
Groundrow	A1	137	205	Zip Strip
	A2	135	206	Zip Strip
	A3	133	207	Zip Strip
	A4	131	208	Zip Strip
	B1	137	205	Zip Strip
	B2	135	206	Zip Strip
	B3	133	207	Zip Strip
	B4	131	208	Zip Strip
	C1	137	213	Zip Strip
	C2	135	214	Zip Strip
	C3	133	215	Zip Strip
	C4	131	216	Zip Strip
	D1	137	213	Zip Strip
	D2	135	214	Zip Strip
	D3	133	215	Zip Strip
	D4	131	216	Zip Strip
BBL Bottom	1	145	111	Alt 360Q 6x12
	2	146	112	Alt 360Q 6x12
	3	94	113	Alt 360Q 6x12
	4	95	114	Alt 360Q 6x12
BBL Top	1	144	109	Alt 360Q 6x12
	2	93	110	Alt 360Q 6x12
BBR Bottom	1	83	102	Alt 360Q 6x12
	2	82	101	Alt 360Q 6x12
	3	142	100	Alt 360Q 6x12
	4	143	99	Alt 360Q 6x12
BBR Top	1	81	98	Alt 360Q 6x12
	2	141	97	Alt 360Q 6x12
FOH 2	1	19	57	Lekolite 30
	2	9	56	Lekolite 30
	2	18	52	Lekolite 30
	3	17	47	Lekolite 30
	4	16	42	Lekolite 30
	4	8	51	Lekolite 30
	6	7	46	Lekolite 30
	8	6	41	Lekolite 30

<b>Position</b>	<b>Unit Number</b>	<b>Channel</b>	<b>Dimmer</b>	<b>Inst Type</b>
FOH 3	1	151	36	PAR 64 WFL
	2	152	35	PAR 64 WFL
	3	153	34	PAR 64 WFL
	4	154	33	PAR 64 WFL
	5	15	32	Lekolite 30
	6	5	31	Lekolite 30
	7	115	30	Lekolite 20
	8	14	29	Lekolite 30
	9	4	28	Lekolite 30
	10	114	27	Lekolite 20
	11	13	25	Lekolite 30
	12	113	24	Lekolite 20
	13	3	23	Lekolite 30
	14	112	22	Lekolite 20
	15	12	21	Lekolite 30
	16	2	20	Lekolite 30
	17	111	19	Lekolite 20
	18	11	18	Lekolite 30
	19	1	17	Lekolite 30
	20	154	16	PAR 64 WFL
	21	153	15	PAR 64 WFL
	22	152	14	PAR 64 WFL
	23	151	13	PAR 64 WFL
Cove		249	265	
House Lights	1	250	37	
	2	250	38	
	3	250	65	
	4	250	66	
	5	250	266	
	6	250	270	
	7	250	271	
	8	250	272	
	9	250	273	
	10	250	275	

## Channel tots 6-14-2011

<b>Channel</b>	<b>Dimmer</b>	<b>Position</b>	<b>Unit Number</b>	<b>Inst Type</b>	<b>Color</b>
1	17	FOH 3	19	Lekolite 30	L201
2	20	FOH 3	16	Lekolite 30	L201
3	23	FOH 3	13	Lekolite 30	L201
4	28	FOH 3	9	Lekolite 30	L201
5	31	FOH 3	6	Lekolite 30	L201
6	41	FOH 2	8	Lekolite 30	L201
7	46	FOH 2	6	Lekolite 30	L201
8	51	FOH 2	4	Lekolite 30	L201
9	56	FOH 2	2	Lekolite 30	L201
11	18	FOH 3	18	Lekolite 30	R09
12	21	FOH 3	15	Lekolite 30	R09
13	25	FOH 3	11	Lekolite 30	R09
14	29	FOH 3	8	Lekolite 30	R09
15	32	FOH 3	5	Lekolite 30	R09
16	42	FOH 2	4	Lekolite 30	R09
17	47	FOH 2	3	Lekolite 30	R09
18	52	FOH 2	2	Lekolite 30	R09
19	57	FOH 2	1	Lekolite 30	R09
21	144	1st Electric	19	8" Fresnel	L106
22	139	1st Electric	15	8" Fresnel	L106
23	134	1st Electric	11	8" Fresnel	L106
24	130	1st Electric	7	8" Fresnel	L106
25	170	2nd Electric	19	8" Fresnel	L106
26	166	2nd Electric	15	8" Fresnel	L106
27	161	2nd Electric	11	8" Fresnel	L106
28	157	2nd Electric	7	8" Fresnel	L106
29	189	3rd Electric	19	8" Fresnel	L106
30	186	3rd Electric	15	8" Fresnel	L106
31	183	3rd Electric	11	8" Fresnel	L106
32	180	3rd Electric	7	8" Fresnel	L106
41	143	1st Electric	18	8" Fresnel	R80
42	138	1st Electric	14	8" Fresnel	R80
43	133	1st Electric	10	8" Fresnel	R80
44	129	1st Electric	6	8" Fresnel	R80
45	169	2nd Electric	18	8" Fresnel	R80

<b>Channel</b>	<b>Dimmer</b>	<b>Position</b>	<b>Unit Number</b>	<b>Inst Type</b>	<b>Color</b>
46	165	2nd Electric	14	8" Fresnel	R80
47	160	2nd Electric	10	8" Fresnel	R80
48	156	2nd Electric	6	8" Fresnel	R80
49	188	3rd Electric	18	8" Fresnel	R80
50	185	3rd Electric	14	8" Fresnel	R80
51	182	3rd Electric	10	8" Fresnel	R80
52	179	3rd Electric	6	8" Fresnel	R80
61	142	1st Electric	17	8" Fresnel	R23
62	137	1st Electric	13	8" Fresnel	R23
63	132	1st Electric	9	8" Fresnel	R23
64	128	1st Electric	5	8" Fresnel	R23
65	168	2nd Electric	17	8" Fresnel	R23
66	164	2nd Electric	13	8" Fresnel	R23
67	159	2nd Electric	9	8" Fresnel	R23
68	155	2nd Electric	5	8" Fresnel	R23
69	187	3rd Electric	17	8" Fresnel	R23
70	184	3rd Electric	13	8" Fresnel	R23
71	181	3rd Electric	9	8" Fresnel	R23
72	178	3rd Electric	5	8" Fresnel	R23
81	98	BBR Top	1	Alt 360Q 6x12	R02/R119
82	101	BBR Bottom	2	Alt 360Q 6x12	R02/R119
83	102	BBR Bottom	1	Alt 360Q 6x12	R02/R119
84	150	1st Electric	23	Alt 360Q 6x12	R02/R119
85	149	1st Electric	22	Alt 360Q 6x12	R02/R119
86	148	1st Electric	21	Alt 360Q 6x12	R02/R119
87	174	2nd Electric	23	Alt 360Q 6x12	R02/R119
88	173	2nd Electric	22	Alt 360Q 6x12	R02/R119
89	172	2nd Electric	21	Alt 360Q 6x12	R02/R119
90	192	3rd Electric	23	Alt 360Q 6x12	R02/R119
91	191	3rd Electric	22	Alt 360Q 6x12	R02/R119
92	190	3rd Electric	21	Alt 360Q 6x12	R02/R119
93	110	BBL Top	2	Alt 360Q 6x12	R62/R119
94	113	BBL Bottom	3	Alt 360Q 6x12	R62/R119
95	114	BBL Bottom	4	Alt 360Q 6x12	R62/R119
96	121	1st Electric	1	Alt 360Q 6x12	R62/R119
97	122	1st Electric	2	Alt 360Q 6x12	R62/R119
98	123	1st Electric	3	Alt 360Q 6x12	R62/R119

<b>Channel</b>	<b>Dimmer</b>	<b>Position</b>	<b>Unit Number</b>	<b>Inst Type</b>	<b>Color</b>
99	151	2nd Electric	1	Alt 360Q 6x12	R62/R119
100	152	2nd Electric	2	Alt 360Q 6x12	R62/R119
101	153	2nd Electric	3	Alt 360Q 6x12	R62/R119
102	175	3rd Electric	1	Alt 360Q 6x12	R62/R119
103	176	3rd Electric	2	Alt 360Q 6x12	R62/R119
104	177	3rd Electric	3	Alt 360Q 6x12	R62/R119
111	19	FOH 3	17	Lekolite 20	R132
112	22	FOH 3	14	Lekolite 20	R132
113	24	FOH 3	12	Lekolite 20	R132
114	27	FOH 3	10	Lekolite 20	R132
115	30	FOH 3	7	Lekolite 20	R132
116	145	1st Electric	20	Lekolite 20	R132
117	141	1st Electric	16	Lekolite 20	R132
118	136	1st Electric	12	Lekolite 20	R132
119	131	1st Electric	8	Lekolite 20	R132
120	127	1st Electric	4	Lekolite 20	R132
121	171	2nd Electric	20	Lekolite 20	R132
122	167	2nd Electric	16	Lekolite 20	R132
123	163	2nd Electric	12	Lekolite 20	R132
124	158	2nd Electric	8	Lekolite 20	R132
125	154	2nd Electric	4	Lekolite 20	R132
126	209	3rd Electric	4	Lekolite 20	R132
	209	3rd Electric	20	Lekolite 20	R132
127	212	3rd Electric	16	Lekolite 20	R132
128	211	3rd Electric	12	Lekolite 20	R132
129	210	3rd Electric	8	Lekolite 20	R132
131	208	Groundrow	A4	Zip Strip	R126
	208	Groundrow	B4	Zip Strip	R126
	216	Groundrow	C4	Zip Strip	R126
	216	Groundrow	D4	Zip Strip	R126
132	201	4th Electric	D4	Zip Strip	R126
	201	4th Electric	C4	Zip Strip	R126
	216	4th Electric	B4	Zip Strip	R126
	216	4th Electric	A4	Zip Strip	R126
133	207	Groundrow	A3	Zip Strip	R124
	207	Groundrow	B3	Zip Strip	R124
	215	Groundrow	C3	Zip Strip	R124
	215	Groundrow	D3	Zip Strip	R124

<b>Channel</b>	<b>Dimmer</b>	<b>Position</b>	<b>Unit Number</b>	<b>Inst Type</b>	<b>Color</b>
134	202	4th Electric	D3	Zip Strip	R124
	202	4th Electric	C3	Zip Strip	R124
	215	4th Electric	B3	Zip Strip	R124
	215	4th Electric	A3	Zip Strip	R124
135	206	Groundrow	A2	Zip Strip	R125
	206	Groundrow	B2	Zip Strip	R125
	214	Groundrow	C2	Zip Strip	R125
	214	Groundrow	D2	Zip Strip	R125
136	204	4th Electric	D2	Zip Strip	R125
	204	4th Electric	C2	Zip Strip	R125
	214	4th Electric	B2	Zip Strip	R125
	214	4th Electric	A2	Zip Strip	R125
137	205	Groundrow	A1	Zip Strip	R127
	205	Groundrow	B1	Zip Strip	R127
	213	Groundrow	C1	Zip Strip	R127
	213	Groundrow	D1	Zip Strip	R127
138	203	4th Electric	D1	Zip Strip	R127
	203	4th Electric	C1	Zip Strip	R127
	213	4th Electric	A1	Zip Strip	R127
	213	4th Electric	B1	Zip Strip	R127
141	97	BBR Top	2	Alt 360Q 6x12	
142	100	BBR Bottom	3	Alt 360Q 6x12	
143	99	BBR Bottom	4	Alt 360Q 6x12	
144	109	BBL Top	1	Alt 360Q 6x12	
145	111	BBL Bottom	1	Alt 360Q 6x12	
146	112	BBL Bottom	2	Alt 360Q 6x12	
151	13	FOH 3	23	PAR 64 WFL	L106
	36	FOH 3	1	PAR 64 WFL	L106
152	14	FOH 3	22	PAR 64 WFL	L180
	35	FOH 3	2	PAR 64 WFL	L180
153	15	FOH 3	21	PAR 64 WFL	R80
	34	FOH 3	3	PAR 64 WFL	R80
154	16	FOH 3	20	PAR 64 WFL	R21
	33	FOH 3	4	PAR 64 WFL	R21
249	265	Cove			
250	37	House Lights	1		
	38	House Lights	2		
	65	House Lights	3		
	66	House Lights	4		
	266	House Lights	5		
	270	House Lights	6		
	271	House Lights	7		
	272	House Lights	8		
	273	House Lights	9		
	275	House Lights	10		