



TECHNICAL SPECIFICATIONS AND INVENTORY RIALTO THEATER

TELEPHONE NUMBERS:

General Administrative Offices 253.591.5890

Production Stage Manager 253.591.5898

Facsimile 253.591.2027

Updated: June 27, 2011

GENERAL DESCRIPTION:

The Theater is a well-lit and heated, restored movie/vaudeville house with one balcony. There is a thrust stage that extends from the proscenium for 28'. There is no orchestra pit; but the first four rows of seats house right can be removed to accommodate a small orchestra. Sound console and light board are located in orchestra level rear, house left. Sound rack and power are stage left. Wi-Fi is (not) available.

SEATING:

Total seats: 742.

Orchestra configuration: Standard four aisles - 598 seats.

Balcony configuration: Standard - 144 seats.

STAGE:

Floor: Masonite is suspended plywood floor.

Floor can be nailed or drilled into.

No traps or elevators.

A Marley type dance floor (black) is available for rent.

Stage Dimensions:

Proscenium: 17'H x 29'6" W Plaster line to back wall: 12'6".

Plaster line to center from stage: 27'6".

Stage width (at widest point): 51'6".

Wall to wall unobstructed: 59'.

Stage right wing unobstructed: 5' Wing height: 10'.

Stage left wing unobstructed: 24' Wing height: 10'.

(THERE IS NO FLY SYSTEM)

SCENERY LOAD IN:

Location:

Court "C" through 7 front door of theater Type: Double doors Capacity: One semi trailer Height from

ground: Two feet from Court "C" level to front entrance. Door dimensions: 6'W x 6'8"H

Note: Parking permit required for this location between the hours of 8:00am arrival with Production Stage Manager and 6:00pm. Arrange prior to.

RIGGING:

None:

DRESSING ROOMS:

Star:

Two on stage level. Lighted mirror on each. Rooms share shower and toilet. Capacity 2-3 per room.

Additional Rooms:

Two on second level. Lighted mirror in each and toilet facilities capacity varies.

WARDROBE:

Laundry facilities are available in the Pantages Theater one half blocks east of the Rialto.

Iron & ironing board.

Steamer.

UNIFORMS:

Stage crew is not uniformed. If it is anticipated crew members will be making scene shifts in view of audience, please notify Production Stage Manager in advance in order that proper attire can be arranged.

EQUIPMENT AVAILABLE:

Music stands: 100.

Chairs (Black): 100.

Band risers:

3 - 4' x 8' x 8".

3 - 4' x 8' x 16".

3 - 4' x 8' x 24".

Ladders.

Chairs, stands, risers, stair Units, tables, available upon request based on availability.

PIANOS:

(Available for rental. Specific instrument availability subject to change. Tuning requires two weeks' notice and an additional fee)

1 - Steinway Grand.

1 - Charles Walter upright.

LIGHTING SYSTEM:

Control:

ETC Express 24/48 2-scene preset with sub-master.

Dimmers:

48 - ETC Sensor 2.4k.

Circuits:

Plug Grounded pin plug.

Patch:

Softpatch is in the board.

Auxiliary Power:

100 amps, 3 phase, 5 wire, 120/208v Connections lugs.

Positions:

Front of house High angle rail 40' to plaster line, 25' above stage

Side Booms:

1 - Each side 18' to 24' above stage, 36' from center line Permanent electrics: 2
(Note: see ground plan for locations)

House lights:

Through the lighting board.

Lighting Inventory:

House Truss:

14 - ETC Source 4 Leko.

Stage Truss:

24 - ETC Source 4 Pars.

6 - ETC Source 4 Leko.

Follow Spots:

2 - Lycian HP Midget 575w.

Barrel Inventory:

2 - ETC Source 4 19Deg.

2 - ETC Source 4 26Deg.

2 - ETC Source 4 36Deg.

20 - ETC Source 4 lens kit for pars.

Miscellaneous Hardware:

6 - Iris pack.

Top-hats. ½ Top-hats.

Pattern holders (A, B size).

Assorted pipe.

Cable:

All Sizes.

SOUND SYSTEM:

Speaker system:

- 4 - Mackie 1232 self powered full range speaker cabinets.
- 2 - Mackie 1501 subwoofer cabinets.

Processing:

- 1 - Midas Venice 32 channel analog mixing console.
- 1 - Dbx 231 dual 31 band graphic equalizer.
- 1 - Dbx dual channel 166XL compressor/limiter.

Playback:

- 1 - Denon DN-615 rackmount cd deck.
- 1 - Adaptor for iPod/MP3 player or computer.

Snakes:

- 1 - 20 x 4 snakes from stage left to FOH.

Microphones:

Wireless:

- 2 - Shure RF SM58 handheld mics.
- 2 - Shure RF beltpack with lavalier mics.

Wired:

- 2 - Shure SM58.
- 2 - Shure SM57.
- 1 - Switchable cardioid talkback Mic at FOH.

DI's:

- 2 - DI's

Monitors:

- 1 - Dbx 231 dual graphic equalizer.
 - 2 - Mackie 450 self powered floor wedges.
- More monitors available upon request.

Com:

- 4 - Clearcom model 501 beltpack with headsets.
- More com available upon request.

VIDEO:

Throw - 86' from back of house.

Screen - 24' image width.

Projection equipment and services available for an additional cost.

ADDITIONAL INFORMATION:

Other equipment available upon request:

Production Stage Manager 253.591.5898

All operating personnel for technical systems are paid by User. Lighting and sound consoles must be operated by Broadway Center staff.

If you require that your lighting is to be pre-hung, please be aware that additional crew expenses will be incurred.

Building on stage is strictly prohibited. Minor repairs may be done with permission of Production stage Manager.

Dry ice is preferred. Chemical foggers are allowed.

All incendiary, explosive and laser devices must meet all safety regulations. Be prepared to show and/or obtain all (APPROPRIATE LICENSES and PERMITS).

Recording of performances by any means may require additional labor charges.

Smoking is prohibited inside all Broadway Center facilities.

No guaranteed secure valuable storage is available.

On street and paid lot parking is available in the immediate area.

DELIVERY OF GOODS:

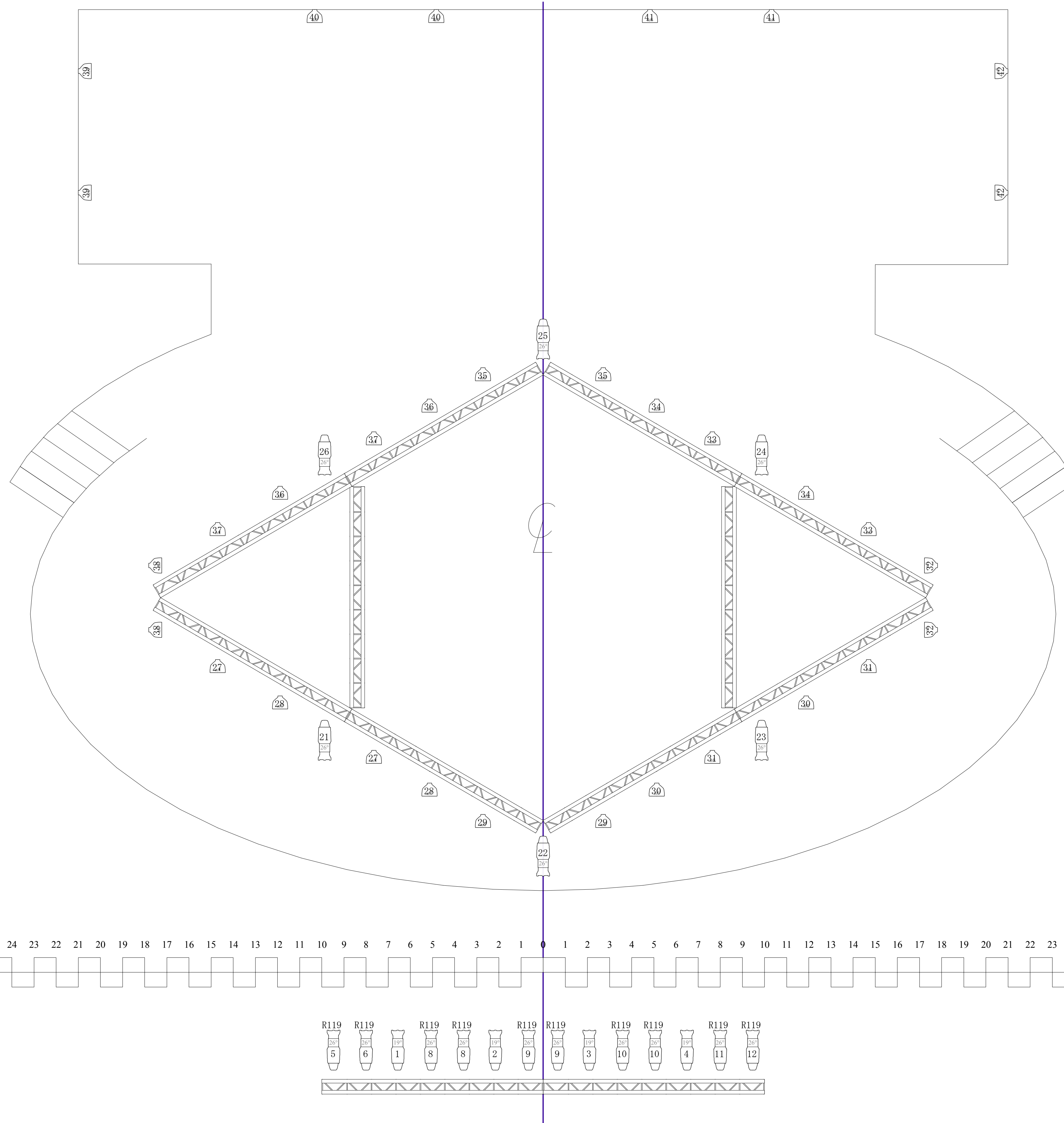
Sets, costumes and other materials belonging to the User delivered prior to contracted time will not be accepted by the Broadway Center Staff without written arrangements and additional charges to the User.

The Broadway Center makes no guarantee that space would be available to receive materials arriving early. In no case are deliveries to be made outside of 9:00 a.m. - 5:00 p.m., Monday through Friday, without special arrangement. The Broadway Center will not accept any goods shipped to the Broadway Center for the User, or for any person claiming to be acting for the User, if any sum is to be paid the carrier upon his delivery thereof.

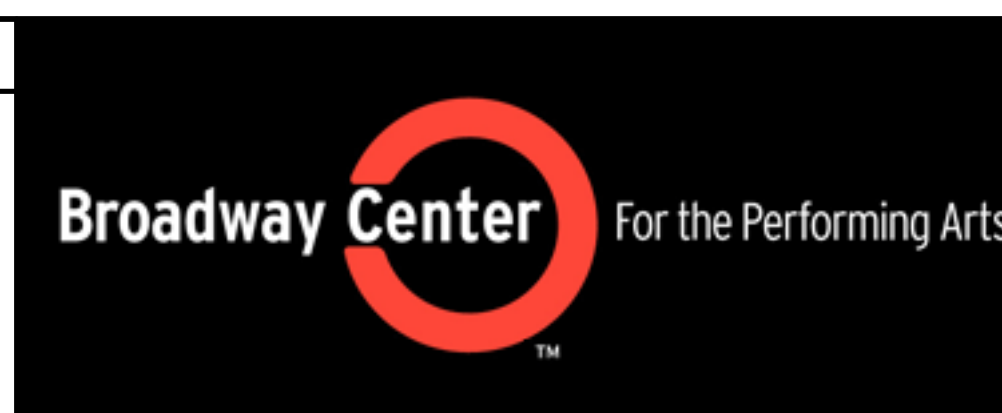
SOUND/LIGHTING CONSOLES:

The House Sound Mixing Lighting Console is located (House Left) in the last row of the orchestra level. (Space is very limited) If your production requires more audio flexibility than the house audio control equipment or location offers, advance notice is required. The theater has an area, orchestra level rear center that may be used.

Local #15 I.A.T.S.E. requires forty-eight (48) hours notice of cancellation of stage hand calls. If less than 48 hours is given, the User may be charged a minimum call at the prevailing rates for each stagehand. Contact Broadway Center Production Stage Manager to make all stage crew calls. Do not phone Local directly (with the exception of yellow card attractions).



Instruments	Key
Source 4 19deg	
Source 4 26deg	
Altman 360Q 6x12	
S4 PAR WFL	



Rialto Theater
Repertory
Lighting Plot
 9th St. between Broadway and Market
 Tacoma, WA 98402

Show Name Rialto Theater Repertory Lighting Plot		
Reference Revision v3	Drawn By Kelly Kirschenman	Date 6-14-2011
CAD File Name Rialto Rep Plot 6-14-2011.vwx		

Instrument Schedule

Unit Number	Inst Type	Color	Channel
1	Source 4 26deg	R119	12
2	Source 4 26deg	R119	11
3	Source 4 19deg		4
4	Source 4 26deg	R119	10
5	Source 4 26deg	R119	10
6	Source 4 19deg		3
7	Source 4 26deg	R119	9
8	Source 4 26deg	R119	9
9	Source 4 19deg		2
10	Source 4 26deg	R119	8
11	Source 4 26deg	R119	8
12	Source 4 19deg		1
13	Source 4 26deg	R119	6
14	Source 4 26deg	R119	5
15	Alt 360Q 6x12		14
16	Alt 360Q 6x12		14
17	Source 4 26deg		16
18	Source 4 26deg		16
19	Alt 360Q 6x12		13
20	Alt 360Q 6x12		13
21	Source 4 26deg		15
22	Source 4 26deg		15
23	S4 PAR WFL		32
24	S4 PAR WFL		31
25	S4 PAR WFL		30
26	Source 4 26deg		23
27	S4 PAR WFL		31
28	S4 PAR WFL		30
29	S4 PAR WFL		29
30	Source 4 26deg		22
31	S4 PAR WFL		29
32	S4 PAR WFL		28
33	S4 PAR WFL		27
34	Source 4 26deg		21
35	S4 PAR WFL		28
36	S4 PAR WFL		27
37	S4 PAR WFL		38
38	S4 PAR WFL		38
39	S4 PAR WFL		37
40	S4 PAR WFL		36
41	Source 4 26deg		26
42	S4 PAR WFL		37
43	S4 PAR WFL		36
44	S4 PAR WFL		35
45	Source 4 26deg		25

Unit Number	Inst Type	Color	Channel
46	S4 PAR WFL		35
47	S4 PAR WFL		34
48	S4 PAR WFL		33
49	Source 4 26deg		24
50	S4 PAR WFL		34
51	S4 PAR WFL		33
52	S4 PAR WFL		32
53	S4 PAR WFL		42
54	S4 PAR WFL		42
55	S4 PAR WFL		41
56	S4 PAR WFL		41
57	S4 PAR WFL		40
58	S4 PAR WFL		40
59	S4 PAR WFL		39
60	S4 PAR WFL		39

Channel Hookup

Channel	Inst Type	Color	Unit Number
1	Source 4 19deg		12
2	Source 4 19deg		9
3	Source 4 19deg		6
4	Source 4 19deg		3
5	Source 4 26deg	R119	14
6	Source 4 26deg	R119	13
8	Source 4 26deg	R119	10
	Source 4 26deg	R119	11
9	Source 4 26deg	R119	7
	Source 4 26deg	R119	8
10	Source 4 26deg	R119	5
	Source 4 26deg	R119	4
11	Source 4 26deg	R119	2
12	Source 4 26deg	R119	1
13	Alt 360Q 6x12		19
	Alt 360Q 6x12		20
14	Alt 360Q 6x12		15
	Alt 360Q 6x12		16
15	Source 4 26deg		22
	Source 4 26deg		21
16	Source 4 26deg		18
	Source 4 26deg		17
21	Source 4 26deg		34
22	Source 4 26deg		30
23	Source 4 26deg		26
24	Source 4 26deg		49
25	Source 4 26deg		45
26	Source 4 26deg		41
27	S4 PAR WFL		36
	S4 PAR WFL		33
28	S4 PAR WFL		35
	S4 PAR WFL		32
29	S4 PAR WFL		29
	S4 PAR WFL		31
30	S4 PAR WFL		25
	S4 PAR WFL		28

Channel	Inst Type	Color	Unit Number
31	S4 PAR WFL		24
	S4 PAR WFL		27
32	S4 PAR WFL		23
	S4 PAR WFL		52
33	S4 PAR WFL		51
	S4 PAR WFL		48
34	S4 PAR WFL		50
	S4 PAR WFL		47
35	S4 PAR WFL		46
	S4 PAR WFL		44
36	S4 PAR WFL		40
	S4 PAR WFL		43
37	S4 PAR WFL		39
	S4 PAR WFL		42
38	S4 PAR WFL		37
	S4 PAR WFL		38
39	S4 PAR WFL		59
	S4 PAR WFL		60
40	S4 PAR WFL		57
	S4 PAR WFL		58
41	S4 PAR WFL		56
	S4 PAR WFL		55
42	S4 PAR WFL		54
	S4 PAR WFL		53